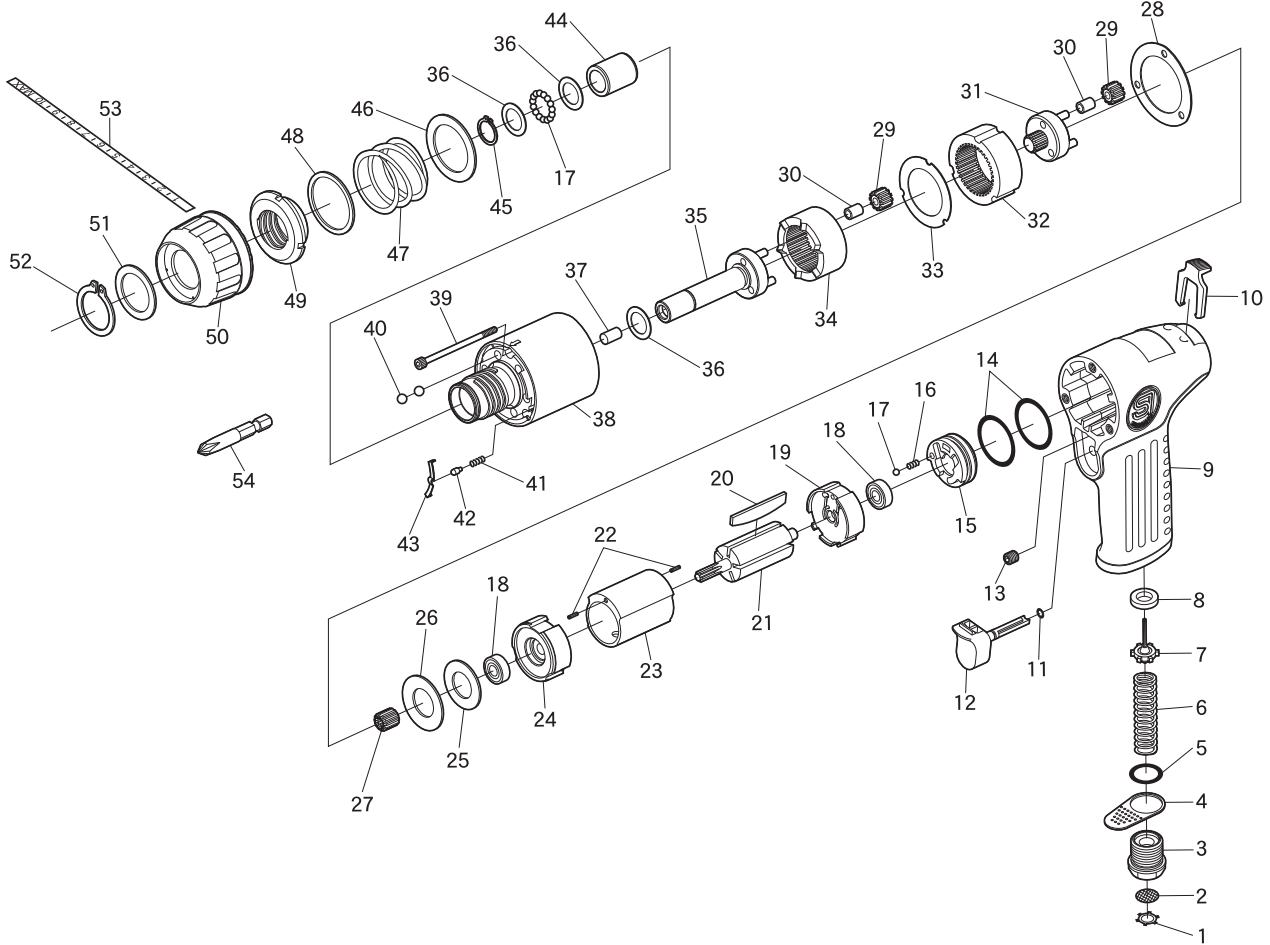


# SI-1170 Screw Driver



Ref. No.	Parts No.	Description	Q'ty	Ref. No.	Parts No.	Description	Q'ty
1	CRTW-12	Retainer	1	28	139AD-20	Motor Gasket	1
2	680-28A	Screen	1	29	217-8-2	Planet Gear incl. Bush(217-8-3)	6
3	139-11	Inlet Bushing	1	30	217-8-3	Bush	6
4	139-12	Deflector	1	31	217-8-5	Reduction Spindle incl. Pinion & Pins(217-8-6, 300-21 x 3)	1
5	957-3	O-Ring	1	32	139AD-3	Internal Gear A	1
6	991-8	Valev Spring	1	33	139AD-9	Thrust Washer	1
7	139-8	Valve	1	34	139AD-4	Internal Gear B	1
8	139-9	Valve Seat	1	35	139AD-15	Spindle incl. Pins(300-21 x 3)	1
9	139AD-1SI	Motor Housing incl. Bush(139-20)	1	36	139AD-17	Washer	3
10	139-3	Control Lever	1	37	139AD-16	Neodymium Magnet	1
11	215RA-8	O-Ring	1	38	139AD-2	Gear Case	1
12	215RA-3	Trigger	1	39	139AD-18	Cap Screw	3
13	R-M60---60	Screw	1	40	SB-50	Steel Ball	12
14	210R-7	O-Ring	2	41	670-45	Reverse Spring	2
15	139DP-3	Reverse Valve	1	42	670-17	Reverse Pin	2
16	960-50	Spring	1	43	139AD-24	Stopper	2
17	SB-1/8	Steel Ball	16	44	139AD-11	Spindle Bush	1
18	696-ZZ	Ball Bearing	2	45	JS-12	Retaining Ring	1
19	139AD-8	Rear Plate	1	46	139AD-12	Spring Seat A	1
20	670-15	Rotor Blade	5	47	139AD-10	Clutch Spring	1
21	139R-2	Rotor	1	48	139AD-13	Spring Seat B	1
22	15-6	Roll Pin(1.5φ-6mm)	2	49	139AD-5	Adjust Nut	1
23	119D-2	Cylinder	1	50	139AD-6	Adjust Dial	1
24	139AD-7	Front Plate	1	51	139AD-14	Washer	1
25	139AD-22	Washer	1	52	JS-22	Retaining Ring	1
26	139AD-21	Cup Spring	1	53	139AD-23	Adjust Dial Label	1
27	217-8-4	Pinion Gear	1	54	181-51	+ Bit No.2	1