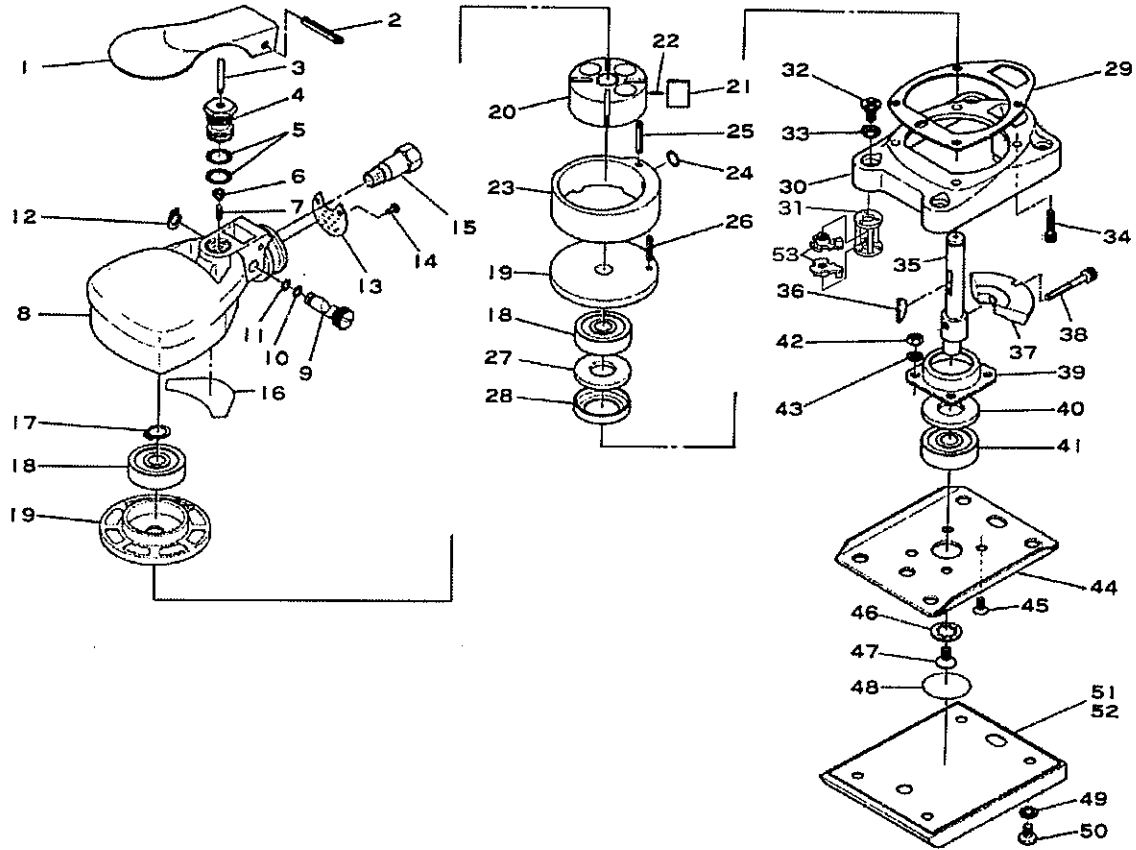


# SI-3003B(M)

## Mini Orbital Sander



Ref. No.	Parts No.	Description	Q'ty	Ref. No.	Parts No.	Description	Q'ty
1	490-8	Throttle Lever	1	28	481-9	Seal Cover	1
2	40-30	Roll Pin(4ø-30mm)	1	29	490-13	Motor Gasket	1
3	455-11	Valve Pin	1	30	490-15BB	Motor Retainer	1
4	490-4	Valve Body	1	31	1040-22	Plastic Support	4
5	S-10	O-Ring	2	32	E-M50--80	Screw	4
6	455-21	Valve	1	33	CT-50	Washer	4
7	490-20	Valve Spring	1	34	Z-632--127	Cap Screw	4
8	490-42	Motor Housing	1	35	490-11	Crank Shaft	1
9	485-4	Air Regulator	1	36	480-23	Key	1
10	P-4	O-Ring	1	37	490-16	Lower Weight	1
11	P-5	O-Ring	1	38	Z-M40--250	Cap Screw	1
12	JS-8	Retaining Ring	1	39	490-18	Shoe Bearing Housing	1
13	490-47	Deflector	1	40	481-10	Spacer (Brass)	1
14	JIM30--50	Screw	2	41	6200LLUN	Ball Bearing	1
15	460-51	Adaptor	1	42	N1-M40	Nut	4
16	490-54	Seal (Crescent)	1	43	AT-40	Washer	4
17	JS-10	Retaining Ring	1	44	490-19B	Shoe (Square)	1
18	6200ZZ	Ball Bearing	2	45	E-M40--80	Screw	4
19	490-53T	Bearing Case	2	46	AT-70	Washer	1
20	490-5	Rotor	1	47	E-M50--100	Screw	1
21	490-6	Rotor Blade	4	48	490-52	Seal (Round)	1
22	490-1	Blade Spring	2	49	AT-50	Washer	4
23	490B-36B	Cylinder	1	50	A-M50--60	Screw	4
24	P-7	O-Ring	1	51	P-3003	Leather Pad incl. Plate (490-58B)	1
25	25-10	Roll Pin (2.5ø-10mm)	1	52	M-3003	Velcro Pad incl. Plate (490-58B)	1
26	25-6	Roll Pin (2.5ø-6mm)	1	53	1040-23	Metal Fitting	8
27	570-1	Felt Ring	1				